

BANDERA COUNTY EXTENSION NEWSLETTER

April 2022

In this Issue:

- Things to Know – 1
 - Wildfire Relief Aid Available Through USDA
 - An Alternative Option to Commercial Fertilizer
- Around the County – 2
 - District 4-H Competitions Coming Up
 - Cattle and State Fair Swine Tag Orders Due April 14th
 - How to Reduce your Risk of Fire Danger
- Livestock Market Reports – 3
 - Hondo Auction Barn Report
 - Gillespie County Auction Barn Report

Things to Know

Continue to pray for rain and be mindful of anything that might start a fire. Until we get some rain, we are still at high risk of wildfires. Avoid burning trash or brush piles until conditions improve.

WILDFIRE RELIEF AID AVAILABLE THROUGH USDA DISASTER ASSISTANCE PROGRAMS

If you or a producer you know has been affected by the recent wildfires in and around Bandera County, they may be eligible for disaster assistance funds through USDA's disaster assistance program. Please visit <https://www.fsa.usda.gov/programs-and-services/disaster-assistance-program/index> for more information on the different programs the USDA can offer and see if you qualify.

AN ALTERNATIVE OPTION TO COMMERCIAL FERTILIZER AS PRICES CONTINUE TO SOAR

The high costs of synthetic fertilizer is hurting producers across the country right now, and we may not see any relief in the near future. Back in March, the USDA announced a grant program for fertilizer producers to support alternative fertilizer production and possibly ease the costs. These grants will be awarded in the summer, so it may be a while until consumers see any change. One alternative option available now is animal manure and poultry litter. Refined animal waste can provide some of the core nutrients that plants need, especially in nitrogen and phosphorus. At the moment, manure fertilizer can be found at cheaper prices than synthetic fertilizers. However demand is high so costs might increase in this area as well, but at the moment, This alternative fertilizer could continue to help the bottom line of our producers.



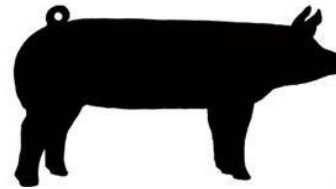
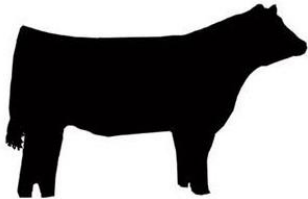
Around the County

DISTRICT 4-H COMPETITIONS COMING UP

The District 10 4-H Roundup competitions will begin April 19th. Those who compete in the district competition and place first or second in their division will advance to the state competition in June. Please wish our county 4-H competitors good luck as they participate in these contests!

CATTLE AND STATE FAIR SWINE TAG ORDERS DUE APRIL 14TH

For 4-H and FFA members participating in the State Fair of Texas or upcoming major livestock shows, validation tag orders are due to the Extension office by Friday, April 14th. Steer tags are \$22 per head, while heifer UIN's and swine tags for State Fair will be \$17 per head. Any orders placed after April 14th will have a \$10 late fee attached to their order.



HOW TO REDUCE YOUR RISK OF FIRE DANGER

The high temperatures and no chance of rain in site means that our risk of wildfires remain high. Here are some ways to help you reduce the risk of starting a wildfire, as well as some ways to protect your home if we do see another fire:

- Keep grass around buildings mowed short
- Keep debris or any wood piles away from buildings
- Don't let safety chains on trailers drag along the ground
- Avoid burning trash and brush piles
- Keep trees trimmed away from roofs

HAVE A TOPIC YOU WOULD LIKE TO SEE COVERED IN A PROGRAM? GIVE ME YOUR SUGGESTION AT DAKOTA.KEMPEN@AG.TAMU.EDU, OR CALL THE EXTENSION OFFICE AT 830-796-7755

Livestock Market Reports

HONDO AUCTION BARN REPORT

As of April 4th. Prices are per pound

Feeder/Stocker Steers	200-300 lbs	\$1.65 – \$1.94
	300-400 lbs	\$1.62 - \$1.94
	400-500 lbs	\$1.58 - \$1.88
	500-600 lbs	\$1.42 - \$1.65
	600-700 lbs	\$1.32 - \$1.54
	700-800 lbs	\$1.12 - \$1.44
	Feeder/Stocker Heifers	200-300 lbs
300-400 lbs		\$1.42 - \$1.68
400-500 lbs		\$1.38 - \$1.62
500-600 lbs		\$1.32 - \$1.48
600-700 lbs		\$1.18 - \$1.37
700-800 lbs		\$1.08 - \$1.24
Slaughter Cows		
Slaughter Bulls		\$0.53 - \$1.16
Cow/calf Pairs		\$1,000 - \$1,570
Stocker Cows		\$600 - \$1,070

GILLESPIE LIVESTOCK AUCTION REPORT

As of April 6th. Prices are per hundred weight

		Steers	Heifers
Medium to Large Frame Cattle	200-300 lbs	\$140.00 - \$220.00	\$160.00 - \$185.00
	300-400 lbs	\$160.00 - \$250.00	\$150.00 - \$180.00
	400-500 lbs	\$150.00 - \$210.00	\$130.00 - \$176.00
	500-600 lbs	\$140.00 - \$196.00	\$125.00 - \$171.00
	600-700 lbs	\$140.00 - \$170.00	\$115.00 - \$156.00
	700-800 lbs	\$130.00 - \$150.00	\$120.00 - \$135.00
Sheep and Goats	#1 Wool lambs 40-60 lbs	\$300.00 - \$360.00	
	#1 Wool lambs 60-80 lbs	\$300.00 - \$340.00	
	BBD lambs 40-60 lbs	\$280.00 - \$345.00	
	Dorper X lambs 40-60 lbs	\$300.00 - \$460.00	
	Dorper X lambs 60-80 lbs	\$300.00 - \$470.00	
	Lt. Slaughter lambs 45-80 lbs	\$300.00 - \$390.00	
	Slaughter lambs 100-150 lbs	\$160.00 - \$260.00	
	Packer ewes	\$100.00 - \$220.00	
	Sheep bucks/rams	\$140.00 - \$275.00	
	#1 Sp/Boer X kids 20-40 lbs	\$300.00 - \$460.00	
	#1 Sp/Boer X kids 40-60 lbs	\$320.00 - \$485.00	
	#1 Sp/Boer X kids 60-80 lbs	\$320.00 - \$485.00	
	Spanish/Boer mutttons	\$280.00 - \$400.00	
	Angora kids	\$200.00 - \$280.00	
	Lower quality kids	\$200.00 - \$280.00	
	Packer Sp/boer X nannies	\$130.00 - \$260.00	
	Stocker Sp/boer X nannies	\$230.00 - \$330.00	
	Angora nannies	\$120.00 - \$200.00	
	Boer X billies	\$200.00 - \$280.00	